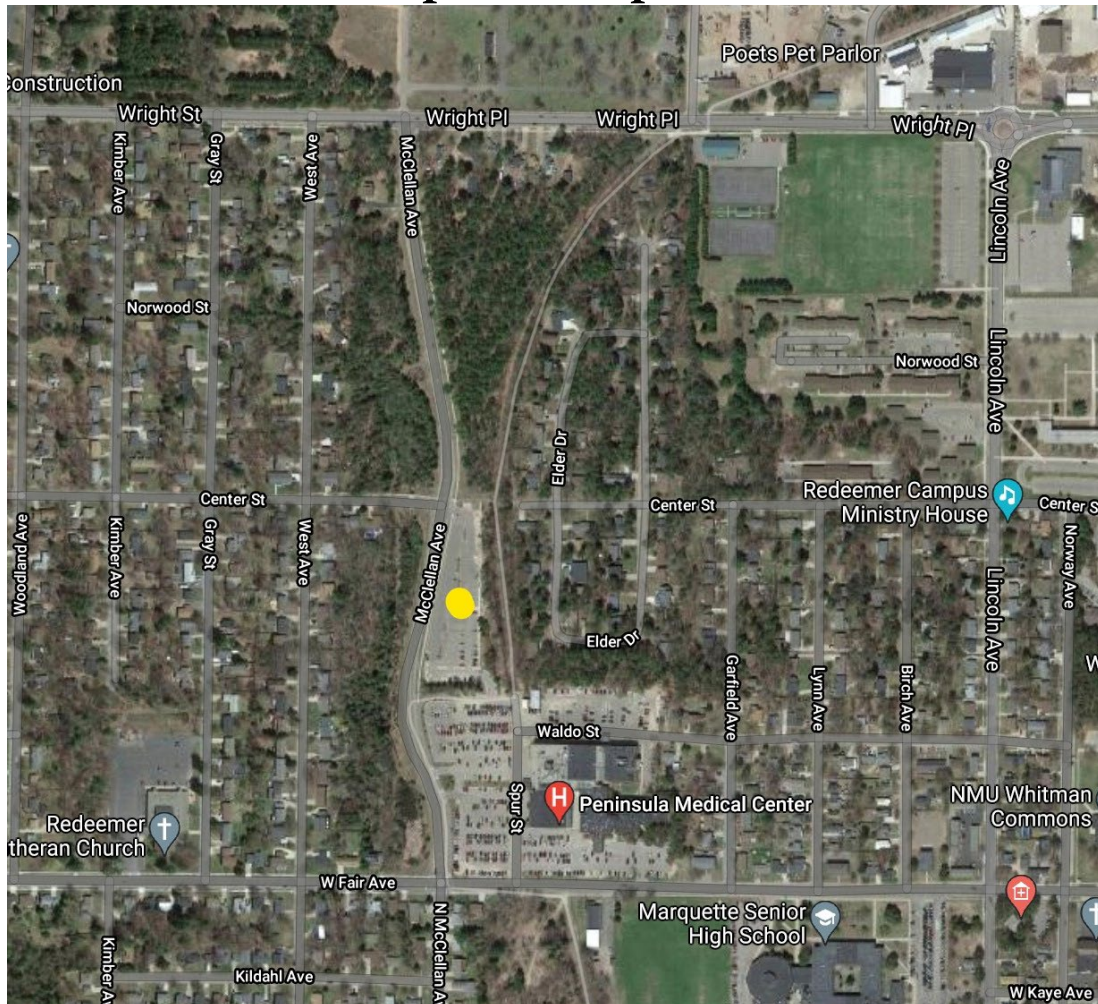




Parking/Shuttle for Marquette Trail 50K Participants & Spectators



Parking at Peninsula Medical Center North Lot (yellow dot): Southeast Corner of McClellan Ave & Center Street in Marquette, Michigan

Buses provided by Marquette Area Public Schools: FACE MASKS REQUIRED TO RIDE THE BUS

BUS SCHEDULE

- 4:00AM – Bus will Load Runners/Spectators & Depart from Medical Center North Lot for Start/Finish Area (Arrival: 4:15 - 4:30AM)
- 4:30AM – Buses will Load Runners/Spectators & Depart from Medical Center North Lot for Start/Finish Area (Arrival: 4:45 - 5:00AM)
- 6:00AM - Buses will Load Spectators & Depart from Start/Finish Area for Medical Center North Lot
- 11:00AM – 5:00PM – Bus will Load every hour from Start/Finish Area to Return Runners/Spectators to Medical Center North Lot